

KARIBAN

REFERENCE : K9105

SIZES : S_M_L_XL_XXL_3XL_4XL

COMPOSITION :

Main fabric : Polarfleece 400 100%polyester

Fabric 2 : Polyester taslon AC coating - 85 For contrasted part 100%polyester

Lining 2 : Polyester 210T - 60 For sleeve lining 100%polyester

WEIGHT :

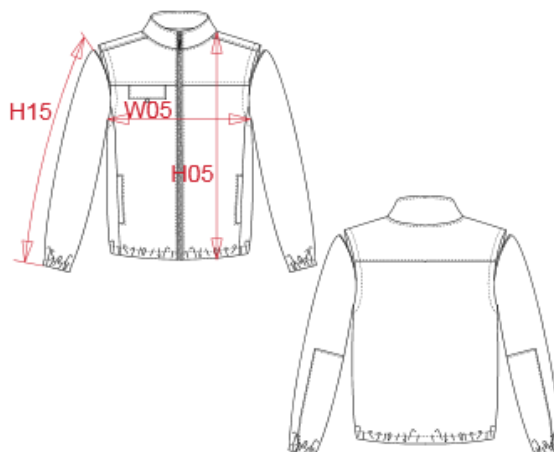
Main fabric : 400 gsm

Fabric 2 : 85 gsm

Lining 2 : 60 gsm

ARTICLE WEIGHT :

860 gr/pc



DESCRIPTION	
Français :	Veste polaire manches amovibles
English :	Fleece jacket with removable sleeves
Nederlands :	Fleecejas met afneembare mouwen
Deutsch :	Fleecejacke mit abnehmbaren Ärmeln
Español :	Chaqueta polar con mangas amovibles
Italiano :	Giacca in pile con maniche staccabili
Português :	Casaco polar com mangas amovíveis

COLORS	PANTONE SERIGRAPHIE
Black	Black
Navy	296C

MEASUREMENT							
Description	S	M	L	XL	XXL	3XL	4XL
H05 Hauteur totale / Total height	70,25	72,50	74,75	77	79,25	82	84,25
W05 1/2 largeur poitrine / 1/2 chest width	53	56	59	62	65	69	72
H15 Longueur manche / Sleeve length	67,50	69,50	71,50	73,50	75,50	77,75	79,75

CARE LABEL				

PACKING	
Box	10 pcs / box S-M => L:58cm W:40cm H:40cm GW:9.00kg NW:8.00kg L-XL => L:62cm W:42cm H:40cm GW:10.00kg NW:9.00kg XXL-3XL => L:66cm W:44cm H:40cm GW:11.00kg NW:10.00kg 4XL => L:69cm W:46cm H:40cm GW:11.00kg NW:10.00kg